



Quick Start Guide v.02.10

ELX3000 APPLIANCE Unified Communications Server



Introduction

The Elastix ELX3000 appliance puts at your fingertips all the tools you need to handle your communications requirements: from telephony, to email, fax, IM, and more. Information related to the Elastix software and updates can be found at www.elastix.com

This guide

This guide offers important information about the ELX3000, including technical specifications and steps to getting started using your new appliance.

Package contents

- 1 Appliance
- 2 Power cords
(1 American and 1 European)
- 3 Quick Start Guide
- 4 Rack-mounting ears



Technical Specifications

Physical

- Height 2.75" (70 mm) – 1.5U
- Width 16.73" (425 mm)
- Depth 13.46" (342 mm)
- Weight 5.5 Kg (12.12 lb)

Hardware

- CPU 1.86 GHz Dual Core
- RAM 4 GB
- Hard Drive 500 GB or 250 GB SSD
- Network Interface Gigabit Ethernet
- USB Ports 4 back
- Other ports Serial Console, Parallel, VGA, Keyboard, Mouse, Line In, Line Out and Mic

Software

- Operating System Elastix (32 bits)

Telephony

- Analog Ports Customizable: up to 24 *
- Digital Ports Customizable: up to 2 E1/T1/J1 *
- Extensions Up to 250 *
- Concurrent Calls Up to 80 *

Power Supply

- Nominal Power 180 W, fanless
- Operating Voltage 120-240 V Auto switching

*: Represents an estimate in a basic scenario. For more information visit <http://elx.ec/benchmark>

Default Settings

Table 1 below lists the default configurations each ELX3000 comes pre-installed with.

PARAMETER	VALUE
Networking	
Hostname	elx.localdomain.com
Primary DNS	192.168.1.1
<i>eth0 (static)</i>	
IP Address	192.168.1.251
Netmask	255.255.255.0
Gateway	192.168.1.1
Log In credentials	
<i>Admin Interface (webUI)</i>	
Username	admin
Password	palosanto
<i>Linux console</i>	
Username	root
Password	palosanto
<i>MySQL</i>	
Username	root
Password	palosanto

Table 1. ELX3000 Appliance Default Settings

Getting started

1. Unpack the appliance
2. Connect the corresponding power cord to a wall outlet and then the other end to the appliance
3. Connect an Ethernet cable (not included) to your PC or laptop and the other end to the Ethernet interface/port on the appliance
4. Connect to your appliance

The ELX3000 appliance is configured by default with the following static IP address on its Ethernet interface: 192.168.1.251/255.255.255.0
Note: if it is not already configured that way, you may need to set your PC or laptop's network interface card (NIC) to have an IP address like 192.168.1.X/255.255.255.0. If this is not possible, contact Technical Assistance (See page 7)

5. Login into the appliance

Once the appliance is connected to your network, you can access the Elastix Admin Interface through a web browser. Just direct your browser to <http://192.168.1.251>, we recommend the use of Firefox.

At the login screen use the following information to access the system:

- Username: admin
- Password: palosanto

6. Change passwords (recommended)

After logging in, place your mouse cursor over the silhouette icon at the top right corner of the Elastix's web UI and click on "**Change Elastix Password**" (Figure 1)

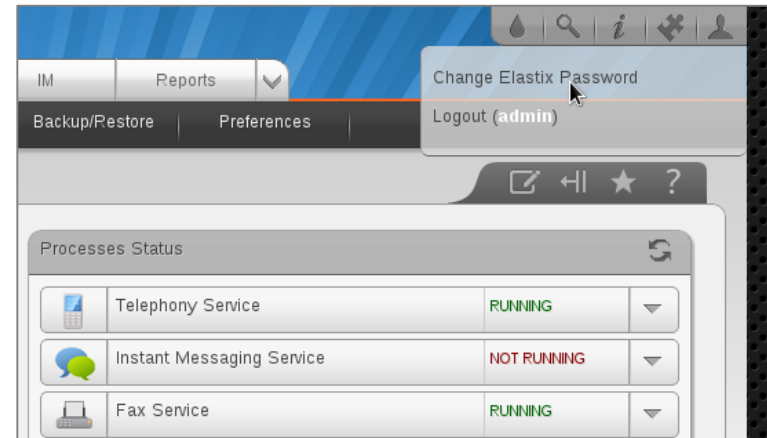


Figure 1. Changing Elastix's Admin Interface password

To change Elastix's root password (Linux console), connect via ssh to the appliance: `ssh root@192.168.1.251` (default password is: palosanto). Once inside execute the command: `passwd` (Figure 2)

```
[root@elx ~]# passwd
Changing password for user root.
New UNIX password:
Retype new UNIX password:
passwd: all authentication tokens updated successfully.
[root@elx ~]#
```

Figure 2. Changing Elastix's Console password

7. Change the IP address (optional)

If needed, change the IP address of your appliance so that it matches the address scheme of your local area network (LAN). At the Elastix web user interface go to: System → Network , here you can configure the global network parameters of your appliance as well as the individual parameters of the network interface. We recommend the use of a static IP address. (Figure 3)

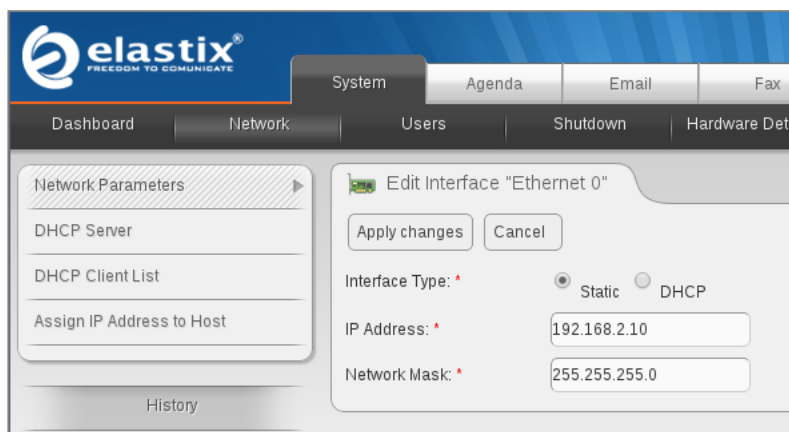


Figure 3. Changing the IP Address on the “Ethernet 0” interface

8. Connect your appliance to your LAN’s switch/router. If needed, reconfigure your PC/laptop’s network interface card IP address settings back to how they were before step 4
9. Configure telephony dial plan rules, virtual fax devices, email service, and other options. Enjoy your Unified Communications Appliance!

Note: For more information on configuring your Elastix visit www.elastix.org or contact Technical Assistance (See page 7)

Thank you for your purchase!

Technical assistance

The Elastix Technical Assistance Center is ready to assist you! For information on how to get this professional support, please visit: <http://elx.ec/elxsupport>

Limited warranty

All Elastix Appliances come with a limited warranty. Please contact your local reseller for more information and instructions on how to claim it.

© 2013 PaloSanto Solutions. All rights reserved. Elastix, the Elastix logo, and ELX3000 are all trademarks of PaloSanto Solutions.

www.elastix.com

www.palosanto.com

+1-877-ELASTIX