



Mediatrix Sentinel Quick Start

Dgw v2.0.30.549

January 30, 2015

Table of Contents

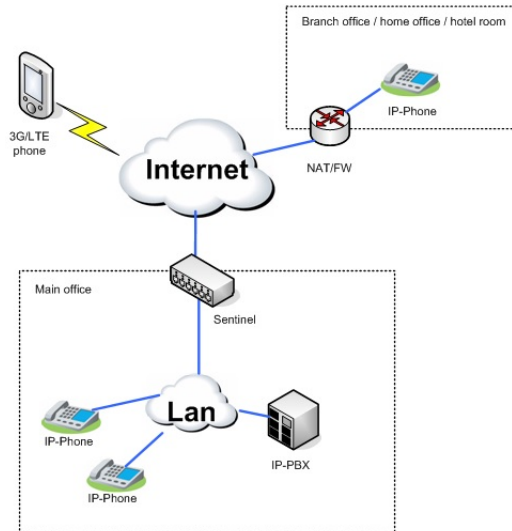
The Mediatrix Sentinel Quick Start.....	3
Using the Mediatrix Sentinel on the Edge.....	4
Using the Mediatrix Sentinel in the LAN without a DHCP.....	4
Using the Mediatrix Sentinel in the LAN with a DHCP.....	5
Logging On To the Sentinel Web Interface.....	5

The Mediatrix Sentinel Quick Start

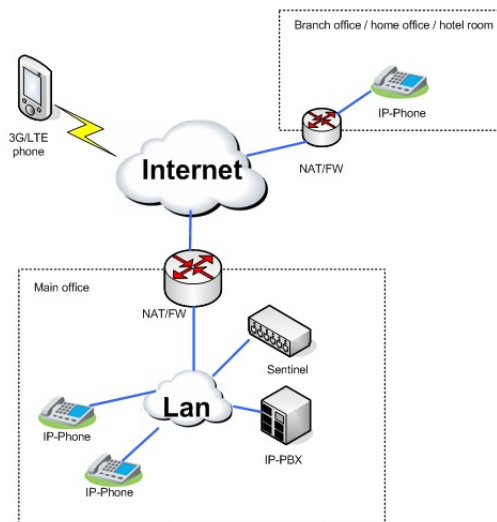
The Quick Start will allow you to connect your cables and access the Management Interface web page for the first time.

Depending on where the Mediatrix Sentinel is used in your Network, either in the LAN or on the Edge, the steps to access for the first time the Management Interface web page will differ.

On the Edge



In the LAN



Depending on your network set-up, proceed with one of the following procedures:


- [Using the Mediatrix Sentinel on the Edge \(p. 4\).](#)
- [Using the Mediatrix Sentinel in the LAN without a DHCP \(p. 4\).](#)
- [Using the Mediatrix Sentinel in the LAN with a DHCP \(p. 5\).](#)

Using the Mediatrix Sentinel on the Edge

Before you start

- Your computer must be set to use the 192.168.0.11 private IP address.
- Make sure that your network connection is working.
- Refer to the Hardware Installation Guide for instructions on how to properly install and connect the telephony card.

Steps

- 1) Make sure the power switch of the Mediatrix Sentinel is Off.
 The Mediatrix Sentinel with dual power supply does not have a power switch.
- 2) Connect a 10/100/1000 BaseT Ethernet RJ-45 cable into the ETH5/EXT Ethernet connector of the Mediatrix Sentinel.
- 3) Connect the other end of the cable into your PC.
- 4) Connect the power cord to the rear of the Mediatrix Sentinel and to an electrical outlet.
- 5) Flip the Mediatrix Sentinel power switch On.

Result

You can now use the 192.168.0.10 IP address to access your unit's management interface.

Next Step


[Logging On To the Sentinel Web Interface \(p. 5\)](#)

Using the Mediatrix Sentinel in the LAN without a DHCP

Before you start

- Your computer must be set to use the 192.168.0.11 private IP address.
- Make sure that your network connection is working.
- Refer to the Hardware Installation Guide for instructions on how to properly install and connect the telephony card.

Steps

- 1) Make sure the power switch of the Mediatrix Sentinel is Off.
 The Mediatrix Sentinel with dual power supply does not have a power switch.
- 2) Connect a 10/100/1000 BaseT Ethernet RJ-45 cable into the ETH5/EXT Ethernet connector of the Mediatrix Sentinel.
- 3) Connect the other end of the cable into your PC.

- 4) Connect the power cord to the rear of the Mediatrix Sentinel and to an electrical outlet.
- 5) Flip the Mediatrix Sentinel power switch On.

Result

You can now use the 192.168.0.10 IP address to access your unit's management interface.

Next Step

[Logging On To the Sentinel Web Interface \(p. 5\)](#)

Using the Mediatrix Sentinel in the LAN with a DHCP

Before you start

- Make sure that your network connection is working.
- Refer to the Hardware Installation Guide for instructions on how to properly install and connect the telephony card.

Steps

- 1) Make sure the power switch of the Mediatrix Sentinel is Off.



The Mediatrix Sentinel with dual power supply does not have a power switch.

- 2) Connect a 10/100/1000 BaseT Ethernet RJ-45 cable into the ETH1 connector of the Mediatrix Sentinel.
- 3) Connect the other end of the cable to a router/switch connected to your LAN.
- 4) Connect the power cord to the rear of the Mediatrix Sentinel and to an electrical outlet.
- 5) Flip the Mediatrix Sentinel power switch On.
- 6) Consult your DHCP server's logs to find out your IP address.



You may also use a network packet sniffer (e.g., Wireshark) to examine the DHCP messages exchanged between the Mediatrix Sentinel and your DHCP server while the Mediatrix Sentinel boots up.

Result

You can now use the DHCP IP address to access your unit's management interface.

Next Step

[Logging On To the Sentinel Web Interface \(p. 5\)](#)

Logging On To the Sentinel Web Interface

Information

For better performances, it is recommended to use the latest available version of Microsoft® Internet Explorer, Google Chrome® or Mozilla Firefox.

 You may not be able to log on to the Management Interface if you are using older versions.

Steps

- 1) In your web browser, enter the IP address used by your Mediatrix Sentinel to communicate with the Management Interface.
 - If your computer is connected to the ETH5/EXT Ethernet connector of the Mediatrix Sentinel, use the 192.168.0.10 IP address.
 - If your Mediatrix Sentinel is configured to use a DHCP, use the DHCP- provided IP address.
- 2) Enter **public** as your username and leave the password field empty.

 You can also use **admin** as a username and **administrator** as password.

- 3) Click **Login**.

Result

The **Information** page of the Management Interface is displayed.



4229, rue de la Garlock
Sherbrooke (Quebec)
J1L 2C8 Canada

Learn more at
www.media5corp.com